

FLA COE
FLB COE
FLD Conventional
Business Class

FLC 112 Conventional
> Century Class Conventional
> Argosy COE
Cargo

> Columbia
Condor
> Coronado
> Business Class M2

**Freightliner
Service Bulletin**

General Information

Some vehicles equipped with a SmartShift™ transmission shift control may have the drive mode slide switch loosen or detach. The slide switch has been redesigned, and vehicles produced after January 1, 2006 have the redesigned switch.

Service kits are available for vehicles that need to have the slide shift replaced. See [Table 1](#) for part numbers. Work instructions are provided below.

Parts

To determine which service kit to order, use [Table 1](#) to match the Freightliner part number of the shift control installed on the vehicle to the appropriate service kit.

Freightliner Part Number	Service Kit Part Number
06-44141-200	GTD 77100 81
06-45341-200	
A06-40349-100	
A06-52312-001	
A06-56660-000	
06-44141-000	GTD 77100 83
06-45341-001	
A06-40349-000	
A06-52312-000	
A06-56660-001	

Table 1, Part Numbers

Work Instructions

1. Shut down the engine and chock the tires.
2. Using a T15 Torx screwdriver, remove the three screws from the back of the SmartShift control.

IMPORTANT: When removing the front handle assembly, be careful not to displace any of the linkage for the selector switch. If the linkage is displaced or the back of the handle becomes unattached, see [Fig. 1](#) for a diagram that shows the correct orientation of the components.

3. Using a free hand to ensure the back cover remains attached to the arm, carefully remove the front handle assembly. Discard the front handle assembly.
4. Ensure that the circuit board, selector lever, and wiring are placed in their proper locations.

IMPORTANT: Be careful not to pinch the wires between the two halves of the control handle.

5. Install the new front handle assembly.
6. Install the three Torx screws through the back of the SmartShift body. Tighten until snug.
7. Verify that the SmartShift functions properly.

Freightliner Service Bulletin

FLA COE
FLB COE
FLD Conventional
Business Class

FLC 112 Conventional
> Century Class Conventional
> Argosy COE
Cargo

> Columbia
Condor
> Coronado
> Business Class M2

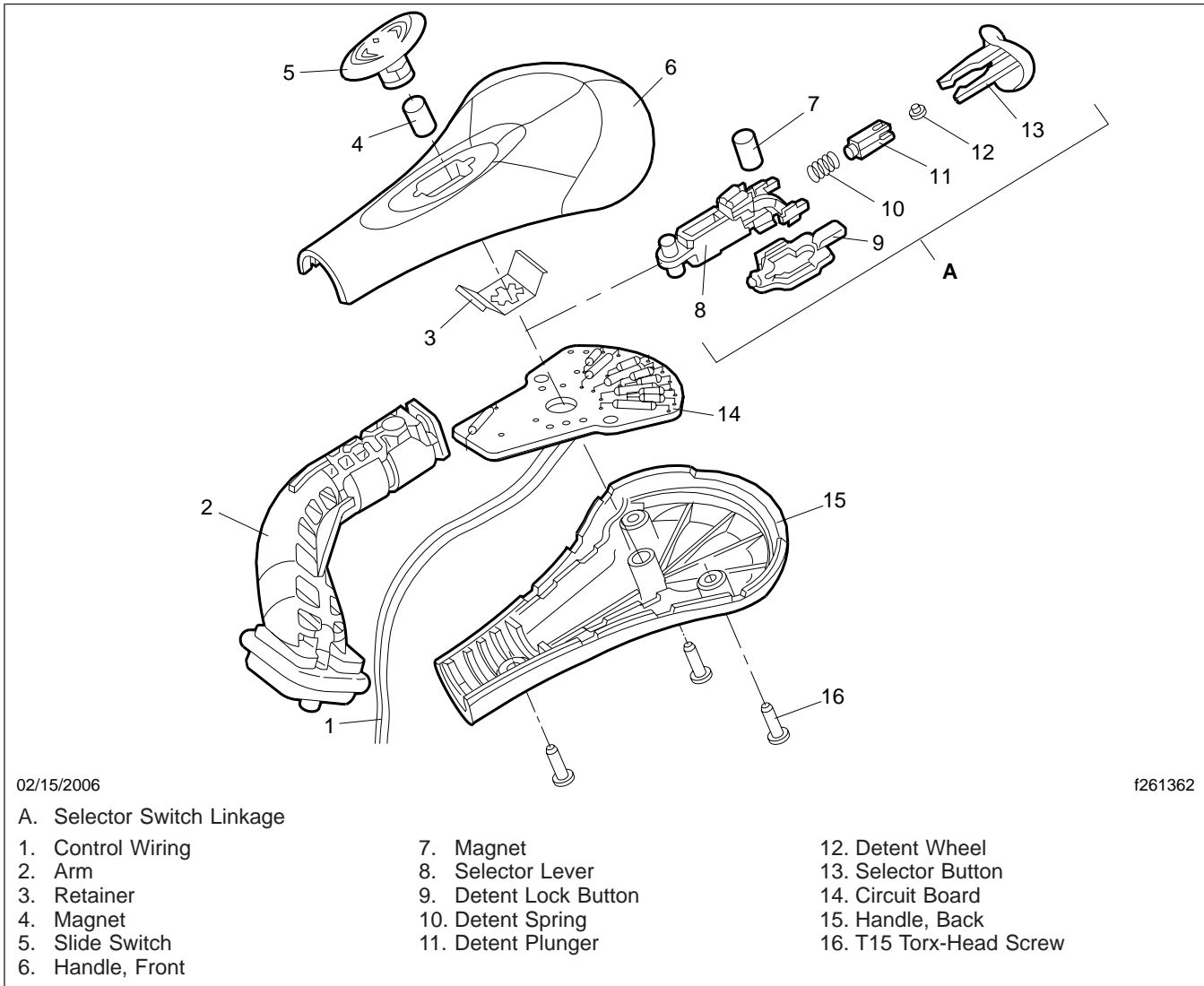


Fig. 1, SmartShift Control

Warranty

Normal warranty applies. When submitting claims, reference this service bulletin by number, and include the part number of any component replaced. Use the damage code and time guide information in [Table 2](#).

Damage Code and Repair Time Information			
Damage Code	Operation Number	Description	Hours
345-001A02950	345-5030A	Mode Switch, SmartShift Lever, R/R (SB26-042)	0.2

Table 2, Damage Code and Repair Time Information