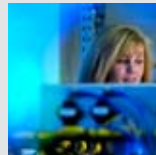
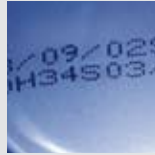


50D PRESSURE SWITCH



FLEXIBLE, SIMPLE AND RELIABLE

THE NEW 50D INTELLIGENT & FLEXIBLE



FLEXIBLE

- » Wide variety of pneumatic connections
- » User can select the required position of the pneumatic connection either at the back or underneath
- » Options: 2PNP, 2NPN, NPN/PNP & analog output with free programming (0...10V, 4...20mA)
- » Interchangeable unit displays (bar, psi, kPA, InHg vacuum)

VALUE

- » Very good price/performance ratio
- » Long service life



Second pneumatic connection

1

2

3



The new 50D pressure switch allows customers to react quickly and effectively to changing requirements through in built intelligence. Delivering flexibility the 50D features easy installation, excellent readability and user configurable pneumatic connections.

INCREASE YOUR PROCESS SAFETY

- » Large LCD display for easy viewing
- » Easy intuitive menu system
- » Automatic colour change in case of errors
- » Second output can be programmed as diagnostic (not applicable to analog versions), allowing for even faster error detection.



LCD display



Comfortable operation



Splash-proof acc. to IP65



Safety is the top priority for the 50D – errors are displayed in a distinct red colour



BUY ONLINE

Simply log on to Norgren's Webstore at store.norgren.com and make your choice from there. Amongst a wealth of other options you can also track orders online and download relevant technical information via the Webstore.

STANDARD VARIANTS

Pressure switch

Pressure range (bar)	Output signal	Port size	Model
0 ... 6 bar	2 x PNP	Push-In fitting \varnothing 4 mm	DS-E1P06P4B2PR00
		G1/4	DS-E1P06F4B2PR00
0 ... 10 bar	2 x PNP	Push-In fitting \varnothing 4 mm	DS-E1P10P4B2PR00
		G1/4	DS-E1P10F4B2PR00
0 ... 6 bar	1 x PNP + 1 x analogue	Push-In fitting \varnothing 4 mm	DS-E1P06P4BPAR00
		G1/4	DS-E1P06F4BPAR00
0 ... 10 bar	1 x PNP + 1 x analogue	Push-In fitting \varnothing 4 mm	DS-E1P10P4BPAR00
		G1/4	DS-E1P10F4BPAR00

Vacuum switch

Pressure range (bar)	Output signal	Port size	Model
-1 ... 0 bar	2 x PNP	Push-In fitting \varnothing 4 mm	DS-E1V10P4B2PR00
		G1/4	DS-E1V10F4B2PR00
-1 ... 1 bar	2 x PNP	Push-In fitting \varnothing 4 mm	DS-E1V11P4B2PR00
		G1/4	DS-E1V11F4B2PR00

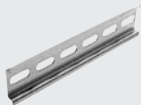

OPTIONS SELECTOR

DS-E1★★★★★B★★R00





Pressure range (bar)	Substitute	Output signal	Substitute
1 ... 0	V10	2 x PNP	2P
-1 ... 1 bar	V11	2 x NPN	2N
0 ... 6	P06	PNP + analogue	PA
0 ... 10	P10	NPN + analogue	NA

Port size	Substitute
G1/4	F4
\varnothing 4 mm Push-In fitting	P4

ACCESSORIES

Wall clip	DIN rail (35 x 7,5)	Adaptor
		
0523962	V10009-C00 (1 m)	0523951 (G1/4 to G1/4) 0523950 (G1/4 to G1/8)

PLUGS

Connector M 12 x 1 90°	Connector M 12 x 1 90°	Connector M 12 x 1 straight	Connector M 12 x 1 straight
			
0523058 (2 m cable, 4-core) 0523053 (5 m cable, 4-core)	0523056 (without cable)	0523057 (2 m cable, 4-core) 0523052 (5 m cable, 4-core)	0523055 (without cable)

SIMPLE ASSEMBLY



Mountable to DIN panel



Clip for wall installation



Many accessories
Cables, plug-in connections etc.

TECHNICAL DATA

Pressure ranges:

0 to 10 bar, 0 to 6 bar

-1 to 0 bar, -1 to 1 bar

Medium:

Compressed air, filtered (40 µm),
lubricated and non-lubricated

Temperature:

Fluid Ambient

0 ... + 60°C

0 ... + 60°C

(please consult our technical service for use
below +2°C)

Accuracy:

± 2% FS* (incl. temperature drift)

± 1,5% FS* (+10 ... 30°C)

Repeatability:

± 0,2% FS*

Switching point:

Adjustable up

0 ... 100% FS*

Reset point:

Adjustable up

0 ... 100% FS*

Linearity:

± 0,5% FS*

MATERIALS:

Housing and display: Polycarbonate

Seals: NBR

Connector (M12 x 1): nickel plated brass

ELECTRICAL PARAMETERS

Electrical connection:

M 12 x 1

Power supply:

$U_B = 24 \text{ V d.c. (17 ... 30 V d.c.)}$

* full scale



AUSTRALIA

Tel: +61 3 921 30 800
 Fax: +61 3 921 30 890
 enquiry@norgren.com.au

AUSTRIA

Tel: +43 22 36 63 520
 Fax: +43 22 36 63 520 20
 enquiry@at.norgren.com

BELGIUM & LUXEMBURG

Tel: +32 2 333 44 11
 Fax: +32 2 333 44 88
 enquiry@be.norgren.com

BRAZIL

Tel: +55 11 5698 4000
 Fax: +55 11 5698 4001
 vendas@norgren.com.br

CANADA

Tel: +1 303 794 2611
 Fax: +1 303 795 9487
 inquiry@usa.norgren.com

CHINA

Tel: +86 21 64 85 69 09
 Fax: +86 21 64 95 60 42
 info@norgren.com.cn

CROATIA

Tel: +386 4 5317550
 Fax: +386 (64) 7000949
 info@si.norgren.com

CZECH REPUBLIC & SLOVAKIA

Tel: +420 465 612 879
 Fax: +420 465 612 908
 info@cz.norgren.com

DENMARK

Tel: +45 44 91 41 66
 Fax: +45 44 91 15 60
 norgren@norgren.dk

FINLAND

Tel: +358 95 712 140
 Fax: +358 95 712 1440
 arki@norgren.fi

FRANCE

Tel: +33 1 60 04 95 95
 Fax: +33 1 60 43 18 86
 norgren@norgren.fr

GERMANY

Tel: +49 2802 49-0
 Fax: +49 2802 49356
 info@norgren.de

HONG KONG

Tel: +852 2492 7608
 Fax: +852 2498 5878
 enquiry@norgren.com.hk

HUNGARY

Tel: +36 1 284 9000
 Fax: +36 1 284 8980
 info@norgren.hu

INDIA

Tel: +91-120-3089500/4089500
 Fax: +91-120-3089700
 enquiry@norgren.co.in

IRELAND

Tel: +353 1 8300 288
 Fax: +353 1 8300 082
 norgren@indigo.ie

ITALY

Tel: +39 039 60 631
 Fax: +39 039 60 63 301
 info@norgrenitalia.it

JAPAN

Tel: +81 6 6876 8913
 Fax: +81 6 6876 8929
 toiawase@norgren.co.jp

MALAYSIA

Tel: +60 3 5121 9255
 Fax: +60 3 5121 2889
 sales@norgren.com.my

MEXICO

Tel: +52 55 1500 64 00
 Fax: +52 55 1500 64 30
 neumatica@norgren.com.mx

NETHERLANDS

Tel: +31 (0)36 548 6828
 Fax: +31 (0)36 548 6838
 enquiry@nl.norgren.com

NEW ZEALAND

Tel: +64 9 579 0189
 Fax: +64 9 526 3398
 enquiry@norgren.co.nz

NORWAY

Tel: +47 67 90 82 01
 Fax: +47 67 97 06 24
 norgren@norgren.no

POLAND

Tel: +48 22 518 9530
 Fax: +48 22 518 9531
 biuro@norgren.pl

ROMANIA

Tel: +40 31 425 17 06
 Fax: +40 31 425 17 08
 office@norgren.ro

RUSSIA

Tel: +7 495 710 86 61
 Fax: +7 495 710 86 62
 sales@norgren-imi.ru

SINGAPORE

Tel: +65 6862 1811
 Fax: +65 6862 1886
 sales@norgren.com.sg

SLOVENIA

Tel: +386 4 531 7550
 Fax: +386 4 531 7555
 info@si.norgren.com

SPAIN

Tel: +34 93 748 9800
 Fax: +34 93 783 0838
 norgren@norgren.es

SWEDEN

Tel: +46 40 59 51 00
 Fax: +46 40 49 50 90
 info@norgren.se

SWITZERLAND

Tel: +41 71 973 82 00
 Fax: +41 71 973 82 01
 norgren@norgren.ch

TAIWAN

Tel: +886 33162673
 Fax: +886 33162910
 enquiry@norgren.com.tw

THAILAND

Tel: +66 2750 3598/99
 Fax: +66 2750 3855
 sales@norgren.co.th

UK

Tel: +44 1543 265 000
 Fax: +44 1543 265 811
 enquiry@uk.norgren.com

UKRAINE

Tel: +38 095 276 42 25
 Fax: +38 044 574 60 36
 yvladnets@norgren.com.ua

USA

Tel: +1 303 794 2611
 Fax: +1 303 798 4856
 inquiry@usa.norgren.com

Supported by distributors worldwide
www.norgren.com

The Roundel, 'Norgren' and 'IMI' are registered trade marks
 © Norgren Limited 2008.
 Due to our policy of continuous development, Norgren reserve the right to change specifications without prior notice.

z7074 en/04/08