

Excelon® Filter-Filter

Combination Units

F72G/C, F73G/C, F74G/C

True modularity with Norgren Quikclamp® connections
General purpose and oil removal filter provide high efficiency oil removal and particle removal down to 0.01 µm
Quick release bayonet bowl
Highly visible, prismatic liquid level indicator lens
Service indicator turns from green to red when the filter element needs to be replaced



Technical data

Fluid:

Compressed air

Maximum pressure:

Transparent bowl w/manual drain:

150 psig (10 bar)

(72) 116 psig (8 bar)

Metal bowl w/manual drain:

250 psig (17 bar)

(72) 116 psig (8 bar)

Operating temperature*:

Transparent bowl:

-30° to 125°F (-34° to 50°C)

Metal bowl:

-30° to 150°F (-34 to 65°C)

* Air supply must be dry enough to avoid ice formation at temperatures below 35°F (2°C).

Particle removal:

down to 0.01 µm

Oil removal:

to class level 2: 0.01 mg/m³

Materials

Body: Zinc, or aluminum

Bowl: (72) zinc, (73, 74) aluminum
 polycarbonate

Metal bowl liquid level indicator lens:

Transparent nylon

F72G, F73G, F74G element: sintered

polypropylene

F72C, F73C, F74C element: synthetic

fiber and polyurethane foam

Elastomers: neoprene and nitrile

Service indicator materials

Body: transparent nylon

Internal parts: acetal

Spring: stainless steel

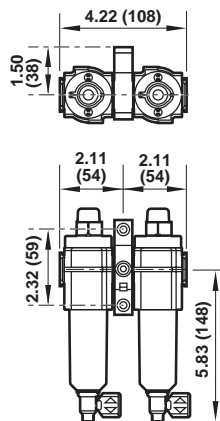
Elastomers: nitrile

Ordering information

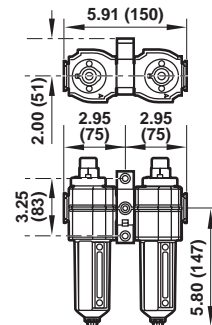
Models listed include PTF threads, service indicator, automatic drain, and metal bowl with level indicator.

Port Size	Model	Weight lb (kg)
1/4"	H72A 2AB AE1 NNN LNN	2 (0.91)
3/8"	H73A 3AB AD1 NNN DNN	2.7 (1.22)
1/2"	H74A 4AB AD1 NNN DNN	4.06 (1.84)
3/4"	H74B 6AB AD1 NNN DNN	4.61 (2.09)

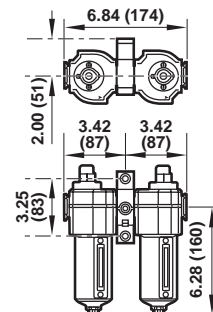
Standard Type H72A-
 Shown with optional Quikclamp®
 wall bracket.



Standard Type H73A-
 Shown with optional
 Quikclamp® wall bracket.



Standard Type H74A Shown
 (H74B Similar)
 Shown with optional Quikclamp®
 wall bracket.



Excelon[®] Filter/Regulator-Lubricator Combination Units

B72/L72, B73/L73, B74/L74

True modularity with Norgren Quikclamp[®] connections

Quick release bayonet bowl

Lubricator flow sensor provides a nearly constant oil/air ratio over a wide range of air flows

All around (360°) visibility of the lubricator sight-feed dome simplifies installation and adjustment

Regulator balanced valve minimizes effect of variation in the inlet pressure on the outlet pressure

Technical data

Fluid:

Compressed air

Maximum pressure:

Transparent bowl: 150 psig (10 bar)

Metal bowl (manual or semi automatic drain): 250 psig (17 bar)

(72) 150 psig (10 bar)

Operating temperature*:

Transparent bowl:

0° to 125°F (-20° to 50°C)

Metal bowl:

0° to 150°F (-20° to 65°C)

* Air supply must be dry enough to avoid ice formation at temperatures below 35°F (2°C).

Particle removal:

5 µm, 25 µm, or 40 µm filter element

Materials

Body: zinc or aluminum

Bonnet: acetal or aluminum

Bowl:

Metal bowl: (72) zinc

(73, 74) aluminum

polycarbonate

Metal bowl liquid level indicator lens:

transparent nylon

Sight-feed dome: transparent nylon

Element: sintered polypropylene

Elastomers: neoprene, nitrile

Other combinations are available.

Please consult Norgren for more information.



C72H

C74H

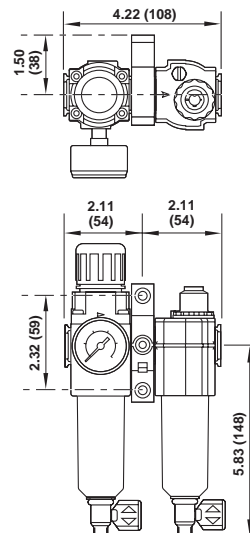
Ordering information

Models include PTF threads. Filter/Regulator (F/R) has knob adjustment, automatic drain, metal bowl with level indicator, 40 µm element, relieving diaphragm, and 150 psig (10 bar) regulating spring, and gauge. Lubricator (L) is a Micro-Fog model with 1/4 turn manual drain and metal bowl with level indicator.

Combination Unit Type	Port Size	Model*	Weight lb (kg)
Filter/Regulator-Lubricator	1/4"	C72H 2AK AE3 RMG QEB	2.37 (1.08)
(F/R L)	3/8"	C73H 3AK AD3 RMG QDB	3.0 (1.36)
(F/R L)	1/2"	C74H 4AK AD3 RMG QDB	5.07 (2.30)
	3/4"	C74H 6AK AD3 RMG QDB	5.00 (2.27)

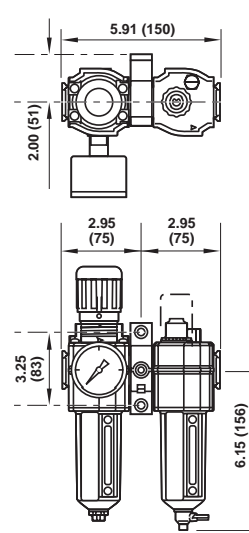
* For oil fog lubricator use "J" in the 4th position.

C72H-

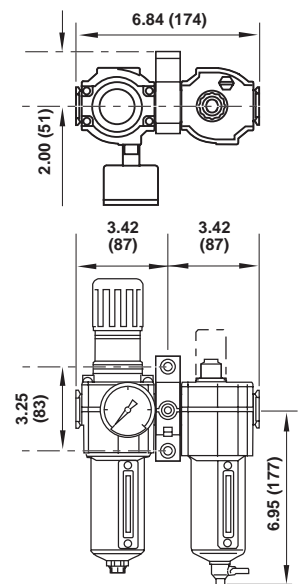


Dimensions in inches (mm).

C73H-



C74H-



Excelon® Filter-Regulator-Lubricator

Combination Units

72, 73, and 74 Series

Compact design

Filter has high efficiency water and particle removal

Push to lock adjusting knob with tamper resistant option

Nearly constant oil density output with varying air flow

Use Micro-Fog models in applications containing one or more points of lubrication.

Use Oil-Fog models to lubricate a single tool, cylinder, or other air driven device.

Technical data

Fluid:

Compressed air

Maximum pressure

Transparent bowl: 150 psig (10 bar)

Metal bowl w/manual drain:

250 psig (17 bar)

(72) 150 psig (10 bar)

Operating temperature*

Transparent bowl:

0° to 125°F (-20° to 50°C)

Metal bowl:

(72) 0° to 150°F (-20° to 65°C)

(73, 74) -30° to 175°F (-34° to 80°C)

* Air supply must be dry enough to avoid ice formation at temperatures below 35°F (2°C).

Particle removal:

5 µm, or 40 µm filter element

Materials

Body: (72) zinc (73, 74) aluminum

Bonnet: (72) acetal (73, 74) aluminum

Regulator bottom plug: acetal

Bowl: (72) zinc (73, 74) aluminum or polycarbonate

Metal bowl liquid level indicator lens: transparent nylon

Sight-feed dome: transparent nylon

Element: sintered polypropylene

Elastomers: neoprene, nitrile



C72A



C74A

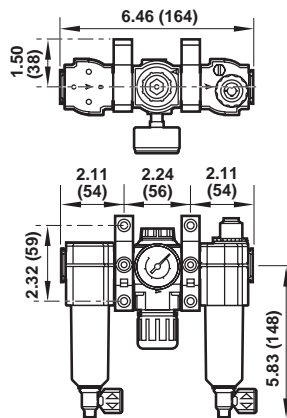
Ordering information

Models listed include PTF threads. Filter (F) includes automatic drain, metal bowl with level indicator, and a 40µm element. Regulator (R) is relieving type with knob adjustment, 150 psig (10 bar) regulating spring, and gauge. Lubricator (L) is a Micro-Fog model with 1/4 turn manual drain and metal bowl with level indicator.

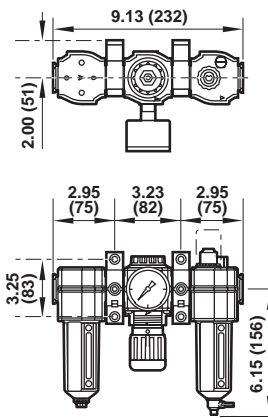
Combination Unit Type	Port Size	Model*	Weight lb (kg)
Filter-Regulator-Lubricator	1/4"	C72A 2AK AE3 RMG QEB	3.23 (1.47)
	3/8"	C73A 3AK AD3 RMG QDB	4.36 (1.98)
	1/2"	C74A 4AK AD3 RMG QDB	6.04 (2.74)
	3/4"	C74A 6AK AD3 RMG QDB	5.91 (2.68)

* For oil fog lubricator use "B" in the 4th position.

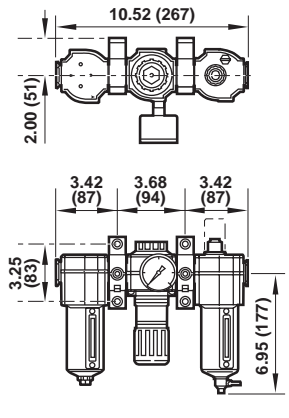
C72A-



C73A-



C74A-



Dimensions in inches (mm).

Filter-Lubricator Combination Units

F72G-L72, F73G-L73, F74G-L74 Series

True modularity with Norgren
Quikclamp® connections

Quick release bayonet bowl

Flow sensor design provides a nearly
constant oil/air ratio over a wide
range of air flows

Highly visible, prismatic liquid level
indicator lens

All around (360°) visibility of the
sight-feed dome simplifies
installation and adjustment

Use Micro-Fog models in applications
containing one or more points of lubrication.

Use Oil-Fog models to lubricate a single tool,
cylinder, or other air driven device.

Technical data

Fluid:

Compressed air

Maximum pressure:

Transparent bowl: 150 psig (10 bar)

Metal bowl: (72) 150 psig (10 bar)

(74) 250 psig (17 bar)

Operating temperature*:

Transparent bowl:

0° to 125°F (-20° to 50°C)

Metal bowl:

(72) 0° to 150°F (-20° to 65°C)

(73, 74) -30° to 175°F (-34° to 80°C)

* Air supply must be dry enough to avoid ice formation at
temperatures below 35°F (2°C).

Particle removal:

5 µm or 40 µm filter element

Materials

Body: zinc

Bowl: zinc, aluminum, or polycarbonate

Metal bowl liquid level indicator lens:

transparent nylon

Element: sintered polypropylene

Sight-feed dome: transparent nylon

Elastomers: neoprene, nitrile



C72C



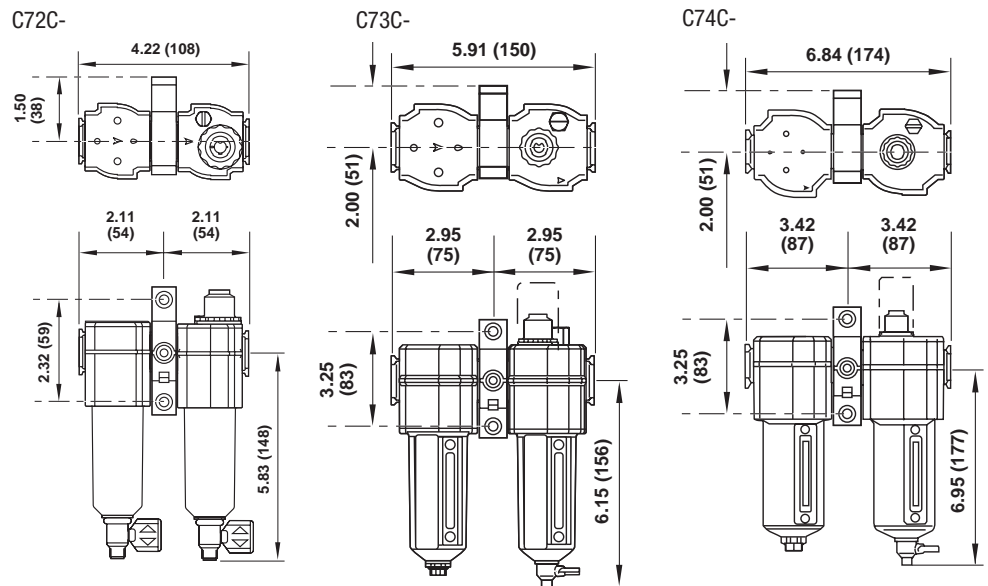
C74C

Ordering information

Models listed include PTF threads. Filter (F) has automatic drain, metal bowl with level indicator, and a 40 µm element. Lubricator (L) is a Micro-Fog model with 1/4 turn manual drain and metal bowl with indicator.

Combination Unit Type	Port Size	Model*	Weight lb (kg)
Filter-Lubricator (F-L)	1/4"	C72C 2AN AE3 NNN QEB	2.3 (1.04)
	3/8"	C73C 3AN AD3 NNN QDB	2.6 (1.18)
	1/2"	C74C 4AN AD3 NNN QDB	3.84 (1.74)
	3/4"	C74C 6AN AD3 NNN QDB	3.75 (1.70)

*For oil fog lubricator use "D" in the 4th position.



Dimensions in inches (mm).